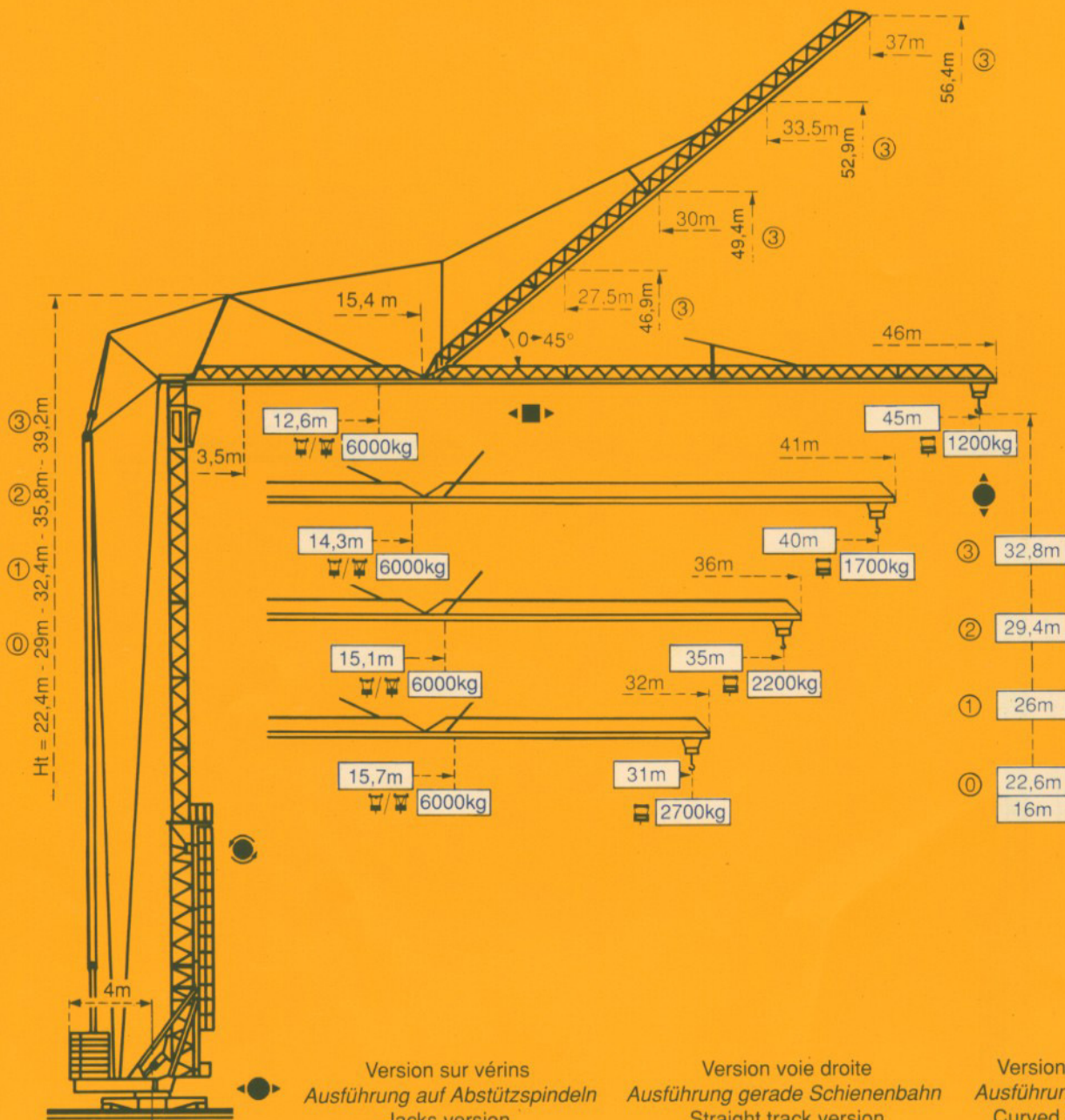


---

**GTMR 356 A**

**POTAIN** 

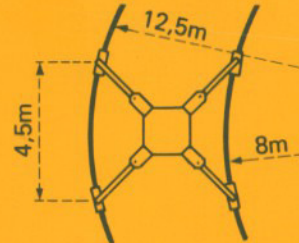
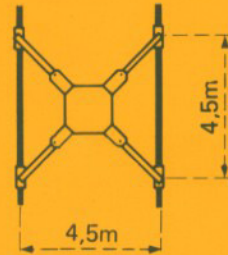
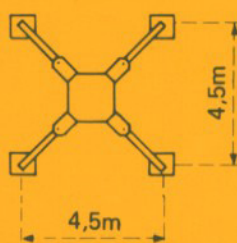




Version sur vérins  
Ausführung auf Abstützspindeln  
Jacks version  
Versión sobre gatos

Version voie droite  
Ausführung gerade Schienenbahn  
Straight track version  
Versión vía recta

Version voie courbe  
Ausführung Kurvengleis  
Curved track version  
Versión vía curva



F1 = Réactions Eckdrücke Reactions Reacciones

F1	● 36t	■ 34t
	26,5t	

● En service  
■ Hors service

● In Betrieb  
■ Ausser Betrieb

● In service  
■ Out of service

● En servicio  
■ Fuera de servicio

A vide sans lest ni train de transport, avec flèche et hauteur maximum.

Ohne Last, Ballast und Transportachse, mit Maximalausleger und Maximalhöhe.

Without load, ballast or transport axles, with maximum jib and maximum height.

Sin cargas, sin lastre, ni tren de transporte, flecha y altura máximas.



**Courbes de charges**

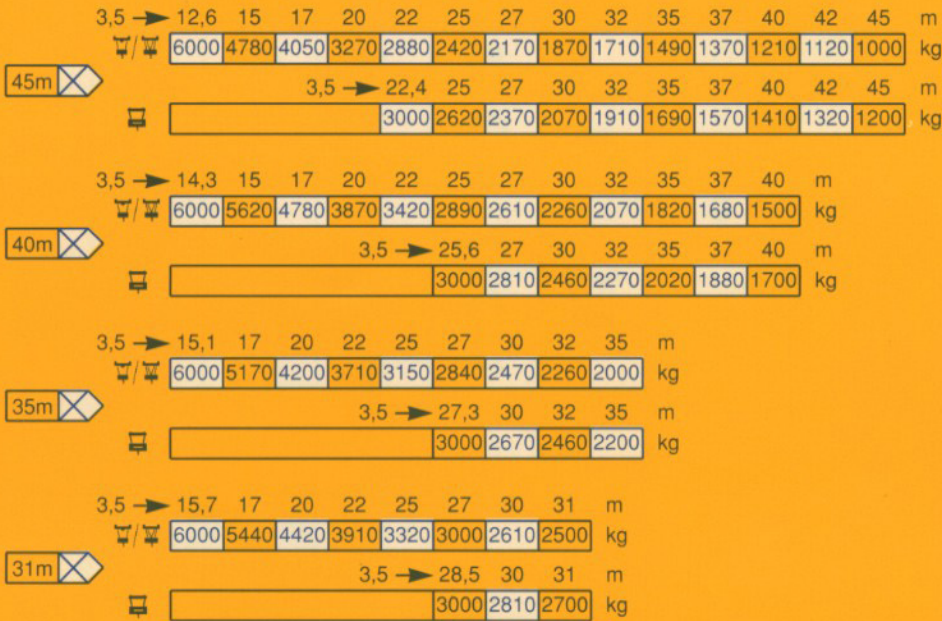
**Lastkurven**

**Load diagrams**

**Curvas de cargas**



Flèche Ausleger Jib Flecha



**Flèche relevée**

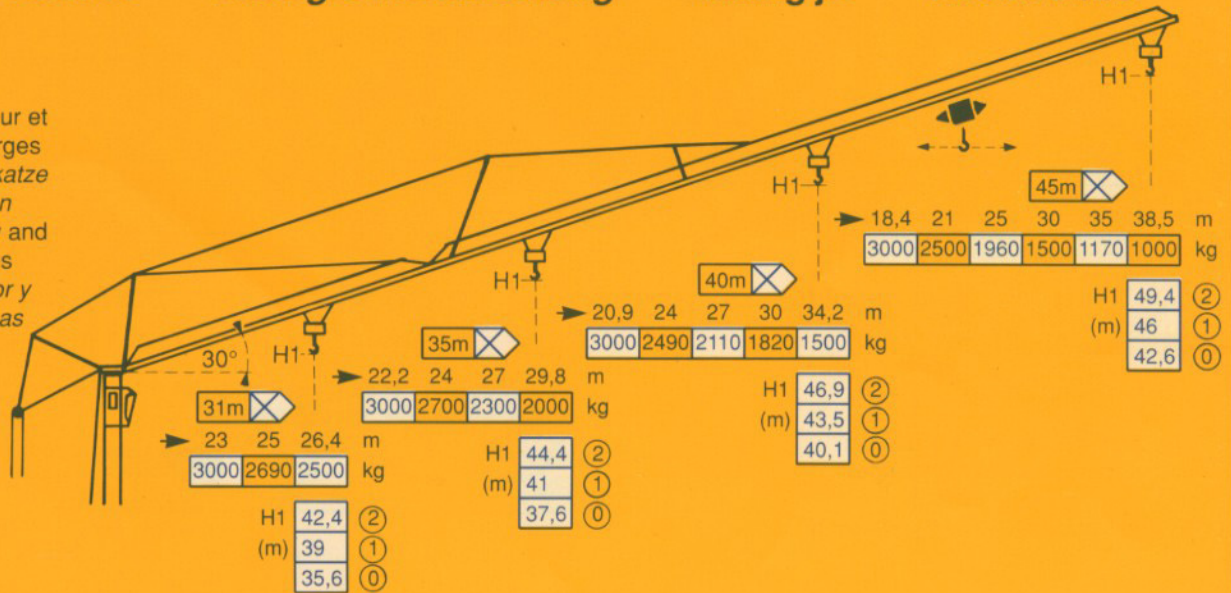
**Ausleger in Steilstellung**

**Luffing jib**

**Flecha izada**



Chariot distributeur et  
 Courbes de charges  
 Verfahrbare Laufkatze  
 und Lastkurven  
 Traversing trolley and  
 Load diagrams  
 Carro distribuidor y  
 Curvas de cargas

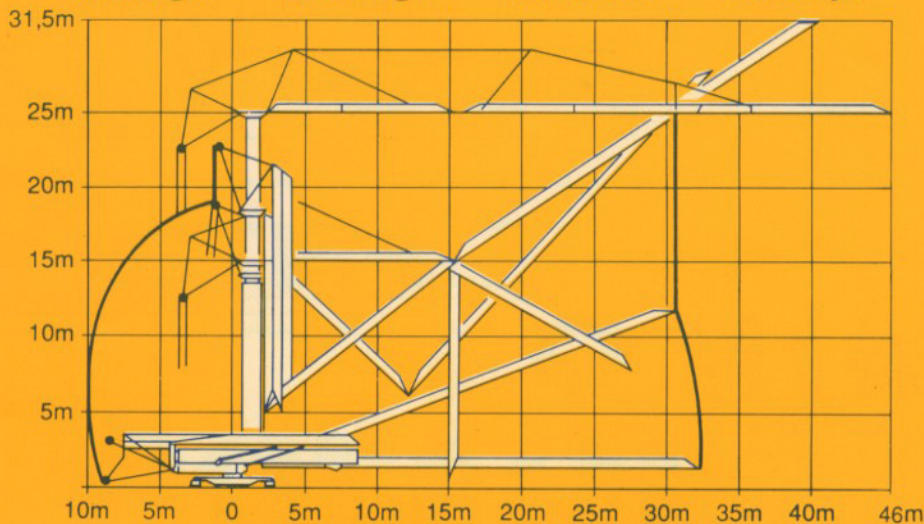


**Montage**

**Montage**

**Erection**

**Montaje**




















**Mécanisme**

**Antriebe**

**Mechanisms**

**Mecanismos**

				m/min	kg	ch-PS hp	kW
Levage Heben Hoisting Elevación	25 PC 15 			5,4	3000	4,5	3,3
				30	3000		
				60	1500		
				2,7	6000	4,5	3,3
				15	6000		
				30	3000	25	18,4
Distribution - <i>Katzfahren</i> Trolleying - <i>Distribución</i>		4 D3 V3	15-30-58		4	3	
Orientation - <i>Schwenken</i> Slewing - <i>Orientación</i>		RCV 61	0 → 0,8 tr/min U/min-rpm		8	5,9	
Translation - <i>Kranfahren</i> Travelling - <i>Traslación</i>		Standard	25		2 x 4	2 x 3	
Réseau - <i>Netzstrom</i> - Mains supply - <i>Red</i>						380V - 50HZ	
Puissance électrique nécessaire - <i>Anschlusswert</i> - Necessary electric power - <i>Potencia electrica necesaria</i>						40 KVA	
Groupe électrogène - <i>Stromaggregat</i> - Generator set - <i>Grupo electrogeno</i>						*	

\* Nous consulter - *Auf Anfrage* - Consult us - *Consultanos*

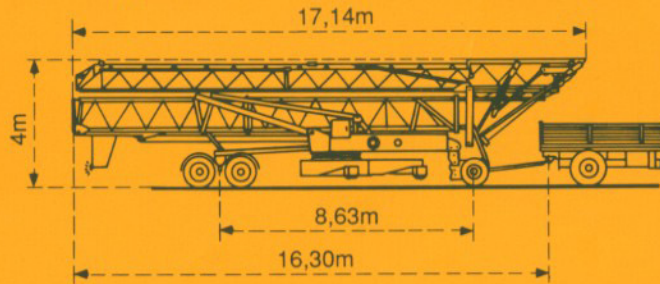
**Transport**

**Transport**

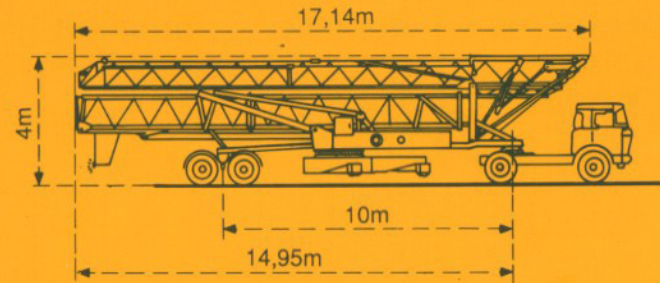
**Transport**

**Transporte**

Version tractée derrière camion  
*Ausführung als LKW-Anhänger*  
 Lorry towed version  
*Versión remolcable detrás de un camion*



Version semi-portée  
*Ausführung als Sattelaufleger*  
 Tractor towed version  
*Versión en semi-remolque*



Conforme à la directive CEE 84/534 sur le niveau acoustique - *Gemäss EWG-Richtlinie 84/534 über Schall-Leistungspegel*  
 In compliance with the EEC 84/534 Instruction on noise level - *Conforme con la directiva CEE 84/534 sobre el nivel acustico*

DIN 15018 H1 B3

NF E52081 - 82

**POTAIN** 

18, rue de Charbonnières, B.P. 173-F 69132 ECULLY Cedex  
 Tél. 72.20.20.20 - Télex 330 179 - Télex. Export 375 213 -  
 Fax 72 20 20 00

POTAIN GmbH 6082 MÖRFELDEN WALLDORF  
 Nordendstr. 79-87 - Postfach 420  
 Tél. 06 105 704.0 - Télex 4.1857 45

**GTMR 356 A**

Réf. 1990.01 LAF 2

Modifications réservées - *Anderungen vorbehalten* - Subject to modification - *Modificaciones reservadas*

Printed in France